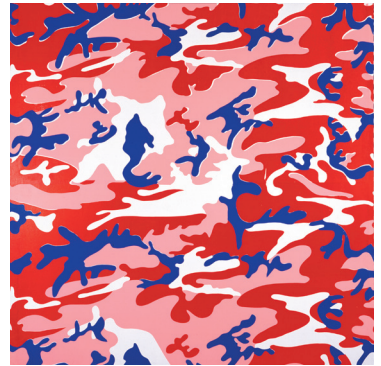
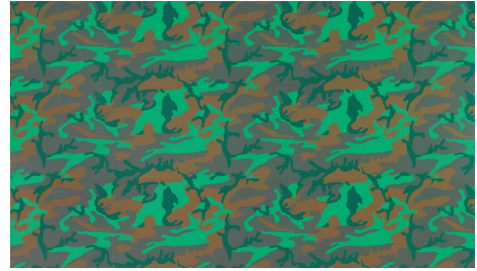


## RECOLORING CAMOUFLAGE!

When we think of camouflage, we think of soldiers or hunters who need to blend into their surroundings so that they won't be seen. Their low-visibility clothing serves as a kind of disguise that allows them to hide while in plain sight. Camouflage patterns are made of interlocking shapes in shades ranging from dark to light, usually in colors that mimic the hues of the environment: shades of green and brown for woodlands, tans and grays for desert. Such patterns, printed on fabric, are far more successful than solid colors at breaking up the outline of a soldier's or hunter's body.

Warhol liked camouflage, perhaps because he enjoyed the idea of hiding. Using a swatch of camouflage netting purchased at an Army-Navy Supply store, he traced the pattern, then manipulated the shapes and produced the pattern in a wide range of color combinations—pinks, reds, oranges, yellows, and blues—colors not normally associated with camouflage. He repeated his pattern over and over again, as if it were a wallpaper design. Sometimes he superimposed the camouflage pattern on his own self-portraits and other favorite images.

This outline drawing is an enlargement of the center, section of Warhol's *Camouflage*. Using crayon or markers, try out your own ideas for camouflage in non-traditional colors.



Illustrations: Andy Warhol (American, 1928-1987). *Camouflage*, 1986. Synthetic polymer paint and silkscreen ink on canvas. 116 x 200 inches. Purchase with funds provided by Esther and Richard Pearlstone through the Pearlstone Family Fund, and partial gift of The Andy Warhol Foundation for the Visual Arts, Inc. BMA 1994.36

Andy Warhol. *Camouflage*. 1986. Acrylic and silkscreen ink on linen, 80¼ x 76¼ inches. The Andy Warhol Museum, Pittsburgh; Founding Collection, Contribution The Andy Warhol Foundation for the Visual Arts, Inc.

Both works: ©2010 The Andy Warhol Foundation for the Visual Arts, Inc./Artists Rights Society (ARS), New York